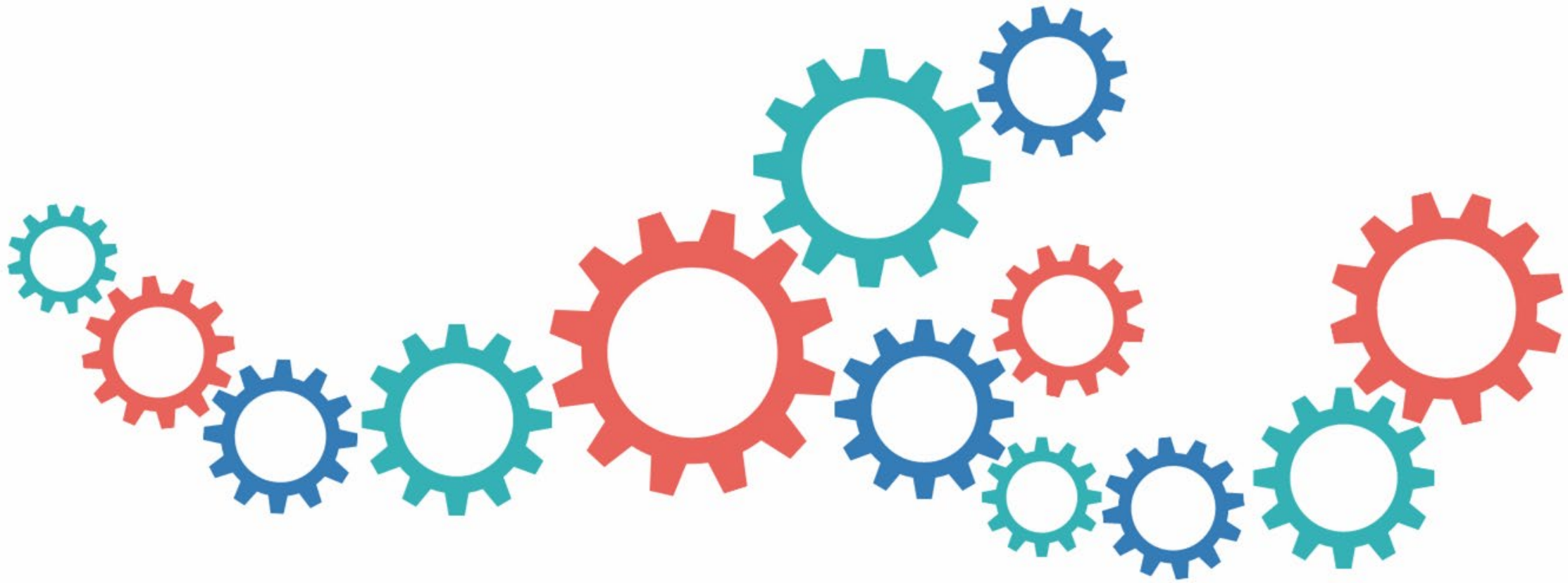




Technical specifications

dfv Horeca Media 2022



Bound inserts information

Bound inserts information

Delivery of bound inserts: one week after the advertising deadline to the print shop

- Bound inserts are **possible** in foodservice, foodservice Europe & Middle East and gvpraxis. ahgz magazines on request.
- A binding **sample**, if necessary a dummy sample with **size and weight** specifications, must be submitted before the order is accepted and confirmed. Bound inserts must be designed in such a way that they are recognizable as advertising and cannot be confused with the editorial section. Bound inserts may only promote the sales program of an advertiser. The placement of bound inserts depends on the technical possibilities. Bound inserts printed on a material other than paper can only be accepted with the prior consent of the Post Office, which must be obtained from the publisher.
- Bound inserts must be **delivered untrimmed**. Multi-page bound inserts must be delivered folded accordingly. The front of the bound inserts must be marked. The type and design of bound inserts must be such that additional preparation and processing is not required. Complications and additional folding and gluing work will be invoiced separately. In the case of multi-page bound inserts, the bound inserts must be closed to the gutter, i.e. in the direction of insertion. In all other cases, a complication surcharge must be invoiced.
- Bound inserts must be delivered in the untrimmed format **218 x 305 mm** (folded on four or more sides). (Incl. 3 mm milled margin and 4 mm head, foot and front trim each).
- Bound inserts for wire stitching: Formats must be coordinated before production.

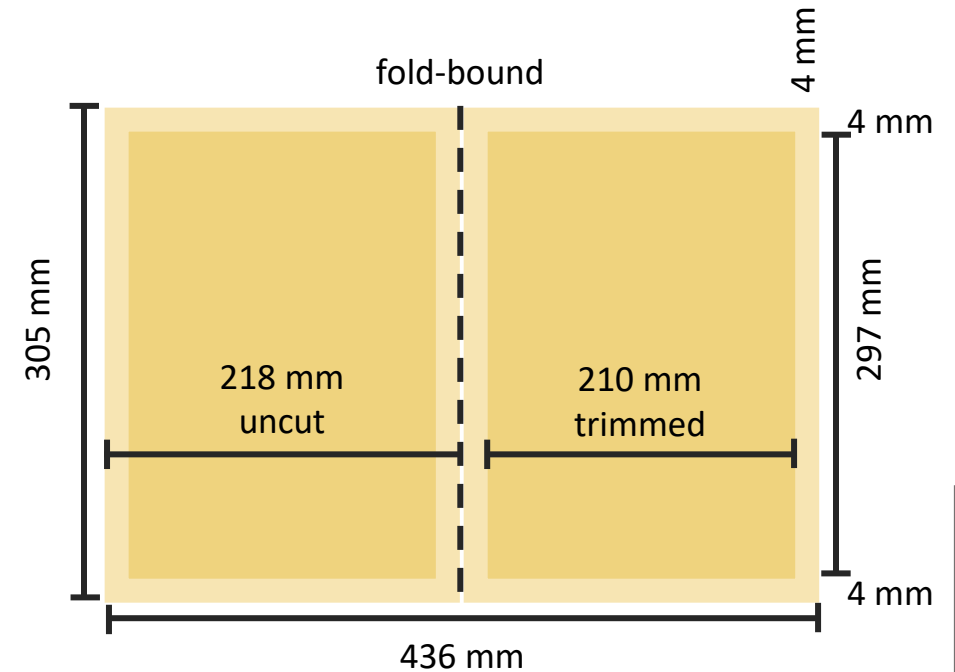
Bound inserts

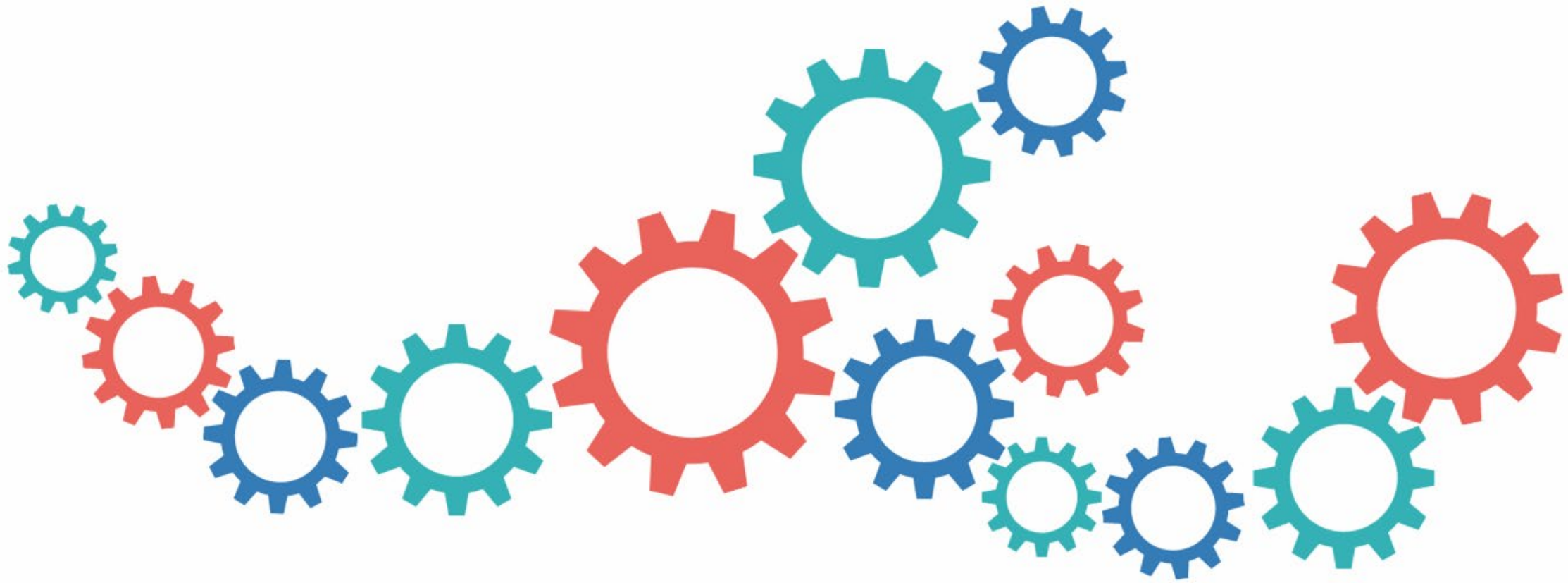
Quantities and formats

Title	Delivery quantity full insert
foodservice	9.000 Copies
foodservice Europe & Middel East	9.500 Copies
gvpraxis	9.200 Copies

Bound inserts must be delivered in untrimmed format 218 x 305mm (folded on four or more sides).

2- und 4-seitiger Beihefter:





Contact

Contact

Shipping address

For bound inserts and supplements
(ahgz, foodservice, gvpraxis)

Westdeutsche Verlags- und Druckerei
GmbH
Warenannahme Akzidenz
z.Hd. Herrn Wolfgang Maier
ahgz xx/2022 oder
foodservice xx/2022 oder
gvpraxis xx/2022

Kurhessenstraße 4-6
64546 Mörfelden-Walldorf

Print documents

Please send your print documents in time by the respective
advertising deadline to: dispo@hotel-gastromedien.de

Shipping address

For bound inserts and supplements
(in den Magazin Specials der ahgz)

W. Kohlhammer Druckerei
GmbH & Co. KG
z.Hd. Herrn Jörg Ackermann
Augsburger Str. 722
70329 Stuttgart

Shipping address

For bound inserts and supplements
(foodservice Europe & Middle East)

Printec Offset Medienhaus e.K.
z. H. Herrn Michael Suckow
foodservice Europe & Middle East
xx/2022
Ochshäuser Straße 45
34123 Kasse